



Article Number - 00009-2010

Date - 28<sup>th</sup> July 2010

Article applies to - **WL50 and WL500 Wifi Adaptors**

## **ISSUE: Wifi Adaptor Drivers Not Installed Correctly**

If the USB connector on the WL50 or WL500 Adaptor is plugged in to the PC without the Digital Yacht Software and Driver CD being in the CD/DVD drive, Windows may not be able to install the correct driver and the product will not work correctly.

This is easily fixed by following the simple step by step guide below. This guide is written for Windows 7 PCs but can also be applied for users with Vista PCs. The underlying process is the same, but the Windows, Buttons and Processes may be slightly different.

## **RESOLUTION:**

If Windows has not installed the drivers correctly, it is necessary to instruct Windows to re-install (update) the drivers, when you have the Digital Yacht Software CD inserted. First insert the Software CD that came with the WL50 or WL500 and then follow the procedure below:-

- 1) Access the Device Manager – click on the Start Button and then type “Device Manager” in the “Search Programs and Files” box.
- 2) Click the Device Manager entry at the top of the displayed list, as shown in Fig 1.
- 3) Unless you are signed in as Administrator, Windows 7 will probably display a window asking for your permission to run the Device Manager. Click OK to continue.
- 4) You should now be looking at The Device Manager window see Fig 2 on the following page.

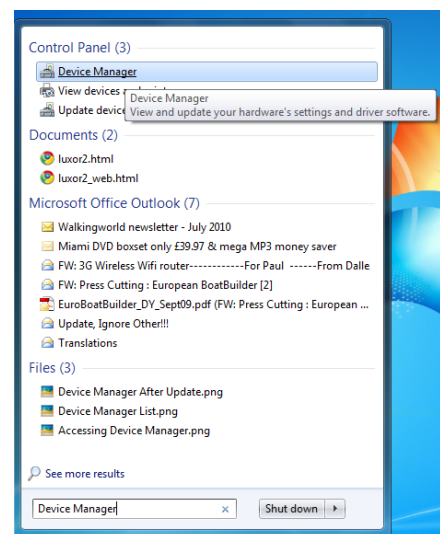


Figure 1

5) The Device Manager lists all of the hardware components that are in your PC. If the WL50 or WL500 Adaptor is not installed correctly, they will be listed as “USB2.0 WLAN” in the “Other Devices” section with a yellow warning icon.

6) Right click on the “USB2.0 WLAN” entry in the “Other Devices” section and select “Update Driver Software...”. This will now trigger the Windows 7 Driver Update Wizard – see Fig 3.

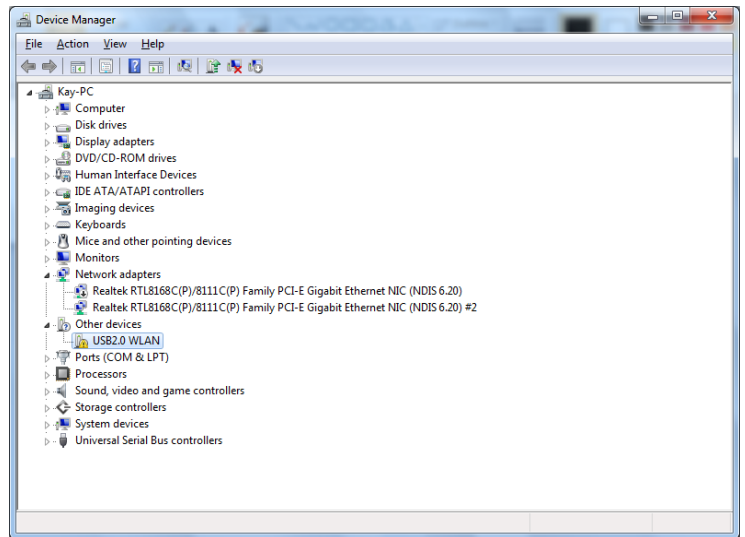


Figure 2

7) If you are connected to the internet, you can use the “Search automatically for updated driver software” option to download the latest driver from the internet.

8) If you are on the boat and/or you do not have internet connection click on the “Browse my computer for driver software” option.

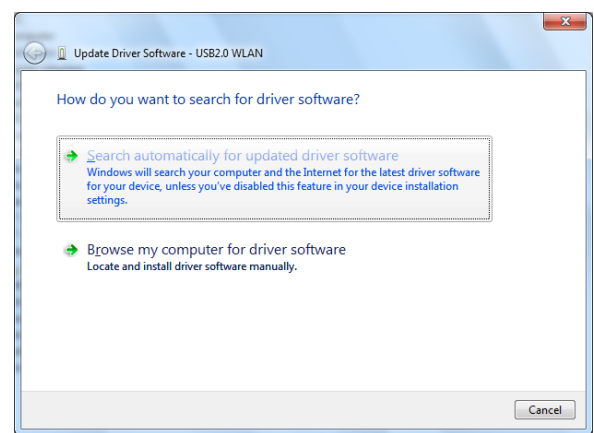


Figure 3

9) You will now be presented with a window that asks you where to search for the drivers see Fig 4. Click on the “Browse” button and you will be taken to the window in Fig 5.

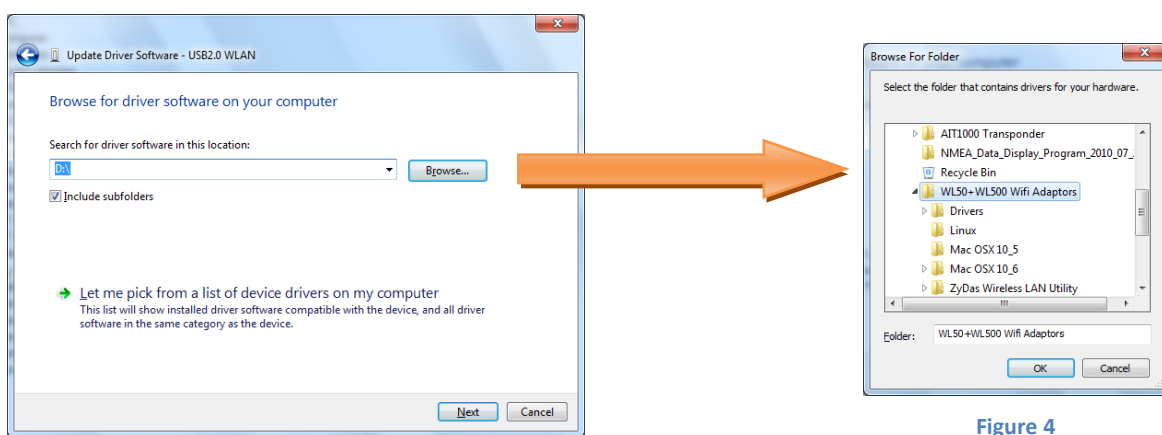


Figure 5

Figure 4

10) Scroll down through the list of locations until you locate the CD drive and then select the “WL50+WL500 Wifi Adaptors” folder as highlighted in Fig 5. Once selected, click on the “OK” button and you will be returned to the previous window – see Fig 6.

- 11) Ensure the correct location is now in the “Search for” box and also that the “Include Subfolders” tick box is ticked, then click “Next”.
- 12) If everything has been selected correctly, you will now see the progress window shown in Fig 7, followed by the “Success” window shown in Fig 8.

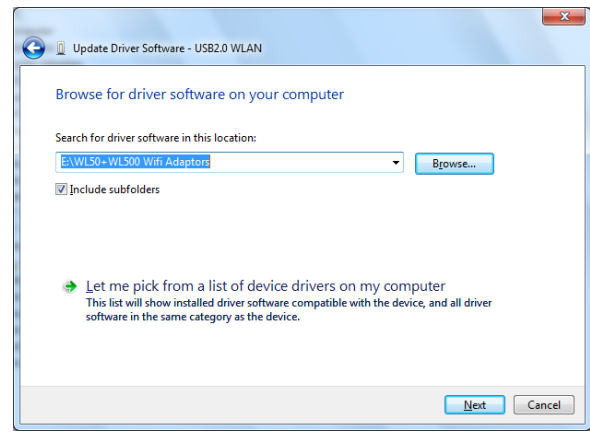


Figure 6

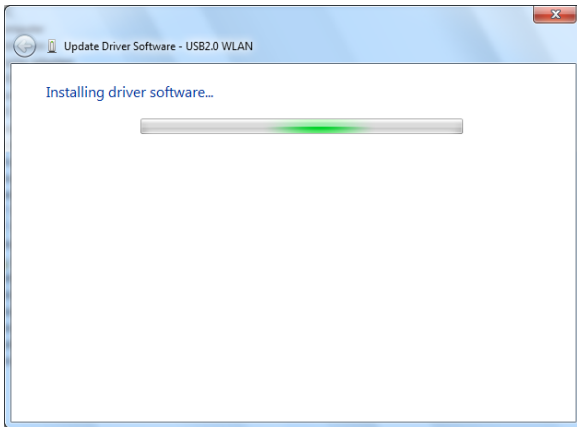


Figure 7

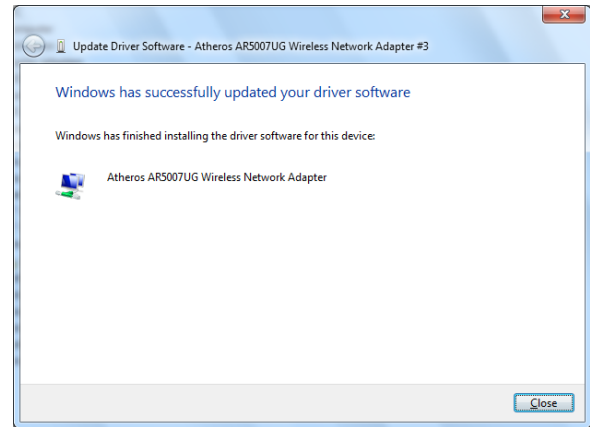


Figure 8

- 13) Assuming everything has successfully installed and you see the window in Fig 8, click on the “Close” button and you will be returned to the Device Manager Window see Fig 9.
- 14) Note that the WL50 or WL500 adaptor is no longer listed as “USB2.0 WLAN” in the “Other Devices” section but is now listed as “Atheros AR50007UG” in the “Network Adaptors” section – as shown in Fig 9.

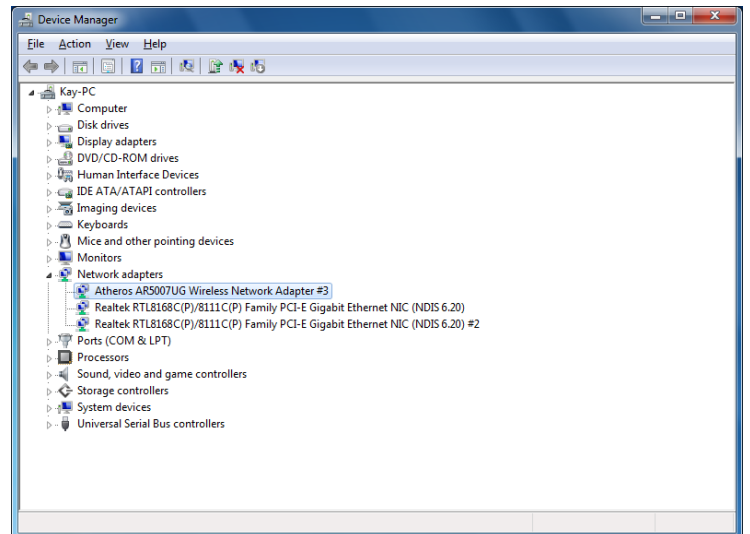


Figure 9

- 15) If the WL50 or WL500 is the only wireless adaptor in the system, then you should now see the Windows Wireless Connections Icon in the bottom right corner of the screen. Clicking on this icon will display a list of available wireless connections in the immediate area like the one in Fig 10 and everything is working OK. You can ignore steps 16-20 which are for systems with multiple wireless adaptors

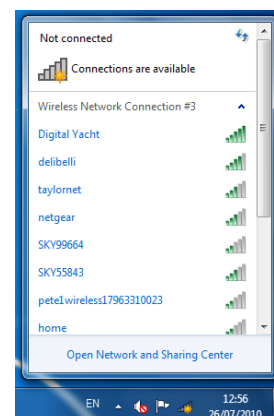


Figure 10

16) If you have multiple wireless networks, such as a Laptop with it's own internal wireless adaptor, then you may wish to change the name of the adaptor that Microsoft Windows automatically allocates to the WL50 or WL500 adaptor. To do this, Click on the Windows Wireless Connections Icon and select "Open Network and Sharing Center" as shown in Fig 10.

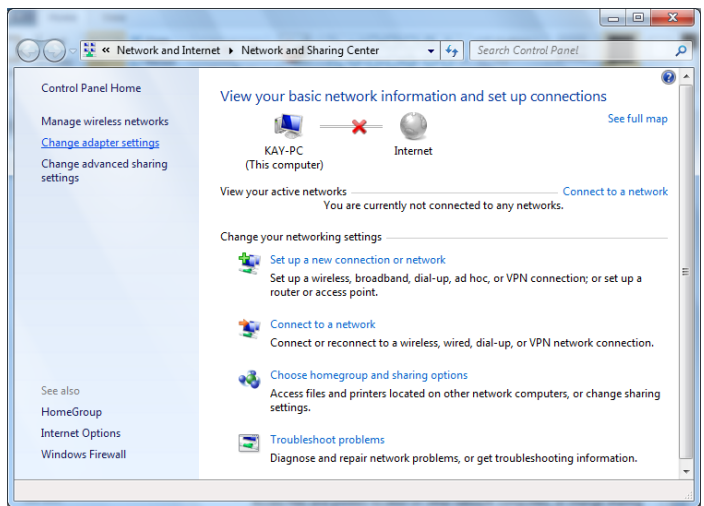


Figure 11

17) The "Network and Sharing Window" is shown in Fig 11, click on the "Change Adaptor Settings" (in Vista, click on "Manage Network Connections") and you will see a window similar to the one in Figure 12.

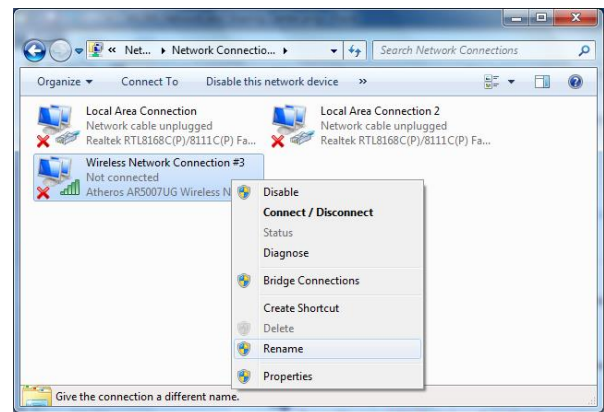


Figure 12

18) In this example, Windows has named the WL50 or WL500 adaptor as "Wireless Network Connection #3", to rename it right click on the entry and select "Rename" from the menu that pops up.

19) It is recommended that you use a name such as "Digital Yacht WL500" so that it is obvious in the future which adaptor is connected.

20) Once you have renamed the connection, it will be listed from now on with the new name you have given it, as per Fig 13. If you place the cursor over the connection, it displays the old name and the type of adaptor.

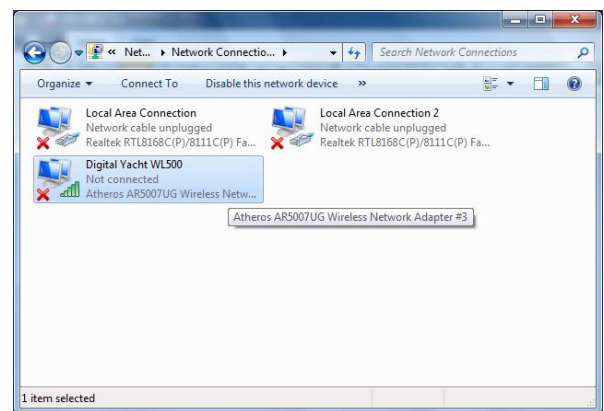


Figure 13

21) On systems with multiple wireless adaptors, when you click on the Windows Wireless Connection Icon, in the list will be not just the wireless connections detected by the WL50 or WL500, but also those detected by the other adaptors. By renaming the WL50 or WL500, it is much easier to see which adaptor you are using to connect – as shown in Fig 14, where the "Digital Yacht WL500" adaptor has connected to the Digital Yacht wireless network.

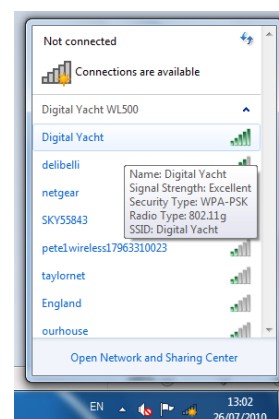


Figure 14